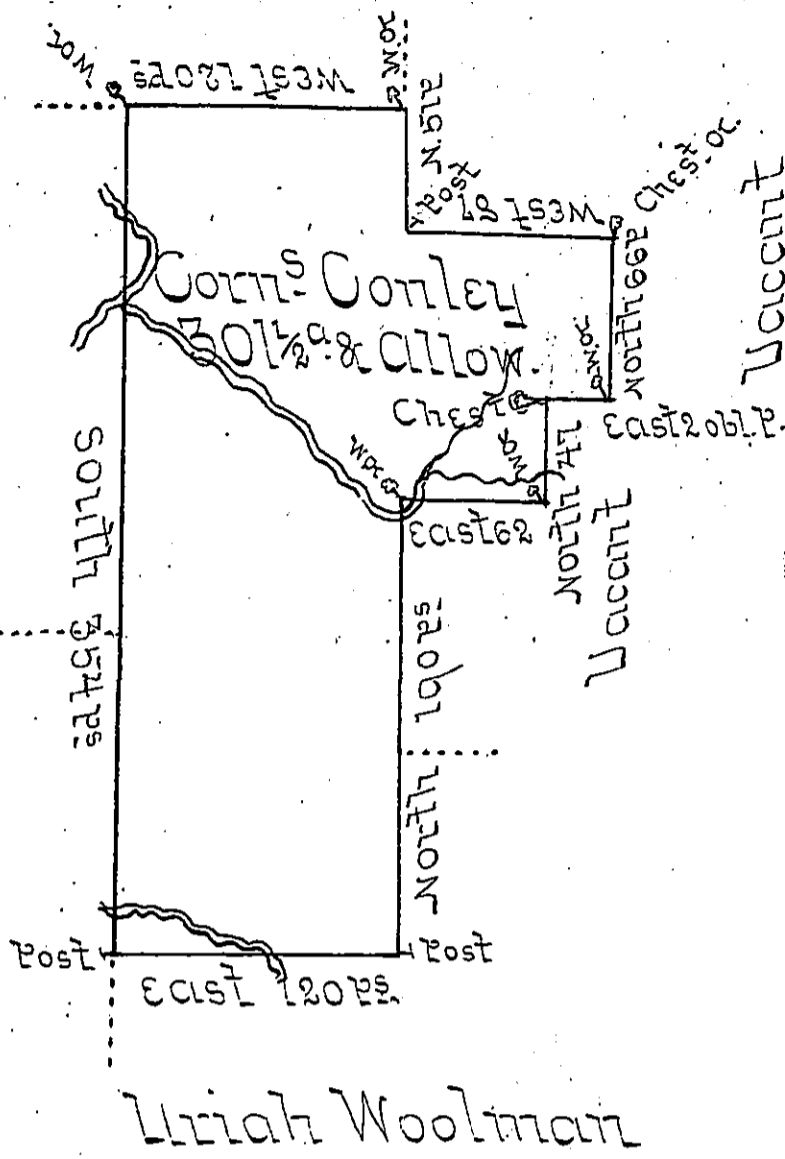


Joseph Burr

John Kreider  
Henry Hesse



Uriah Woolman

A Draught of a Tract of Land Called \_\_\_\_\_ Situate  
 on the Waters of Gravel Run adjoining land surveyed  
 to Uriah Woolman on the Easterly Side of the North  
 East Branch of Susquehanna River formerly in  
 Berks but now in Northumberland County Con-  
 taining three hundred and one Acres & a half of  
 an Acre besides the usual allowance of 6<sup>th</sup> Cent  
 for Roads &c surveyed the 20<sup>th</sup> day of September  
 1772 for Cornel<sup>s</sup> Conley in Pursuance of a Warrant  
 Dated the 15<sup>th</sup> Day of October 1771

Chas Stewart  
Dep. Sur<sup>r</sup>

To John Lukens Esq<sup>r</sup>  
Surveyor Gen<sup>l</sup>

IN TESTIMONY that the above is a copy of the original remaining on file in  
 the Department of Internal Affairs of Pennsylvania, made  
 conformably to an Act of Assembly approved the 16th day of  
 February, 1833, I have hereunto set my Hand and caused  
 the Seal of said Department to be affixed at Harrisburg,  
 this Twenty first day of March 1904,

*James P. Benson*  
 Secretary of Internal Affairs.